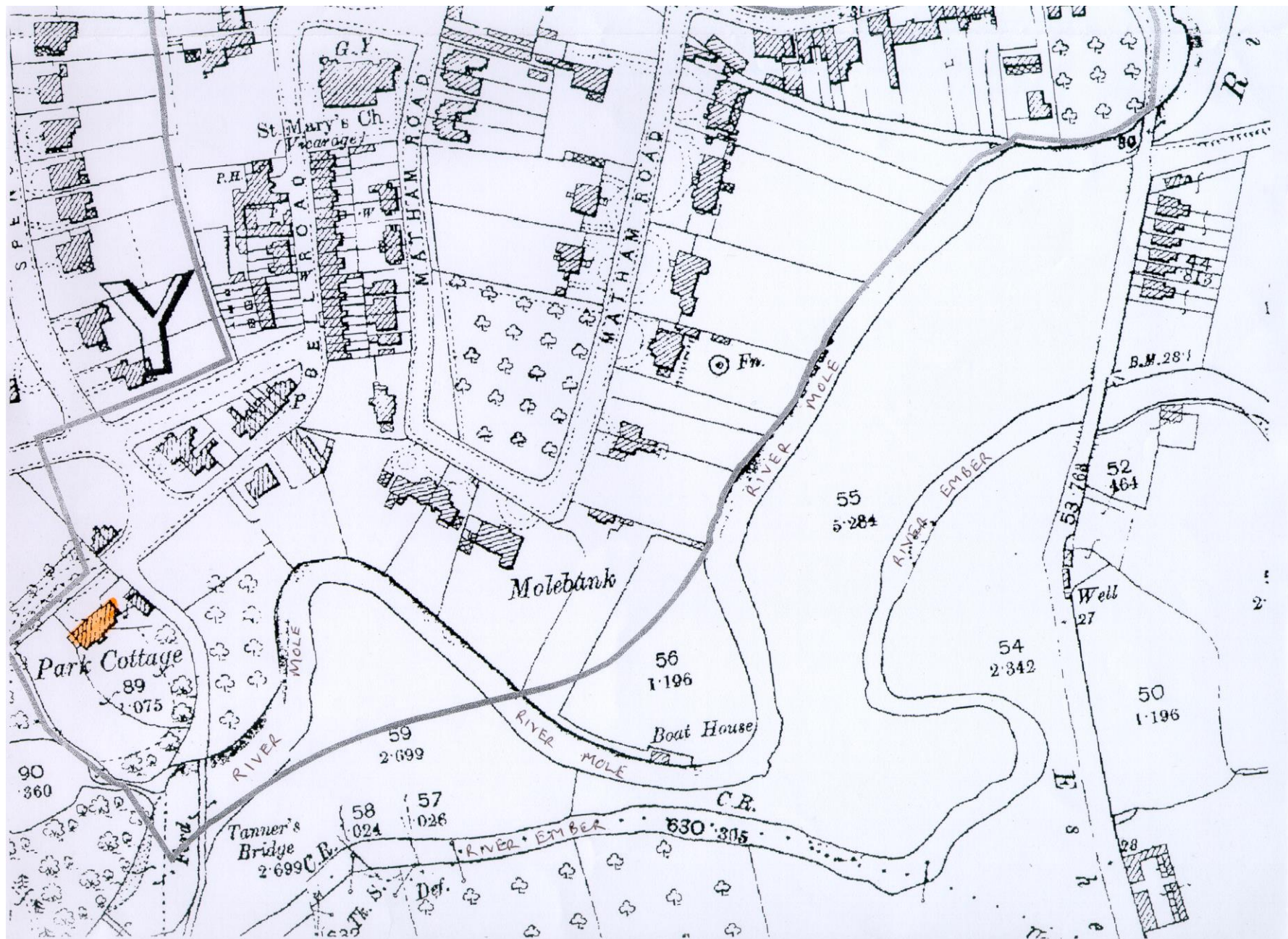


History of Cottage Hospitals in Molesey







COPY OF 334.1987 NEG. IN DRAWER



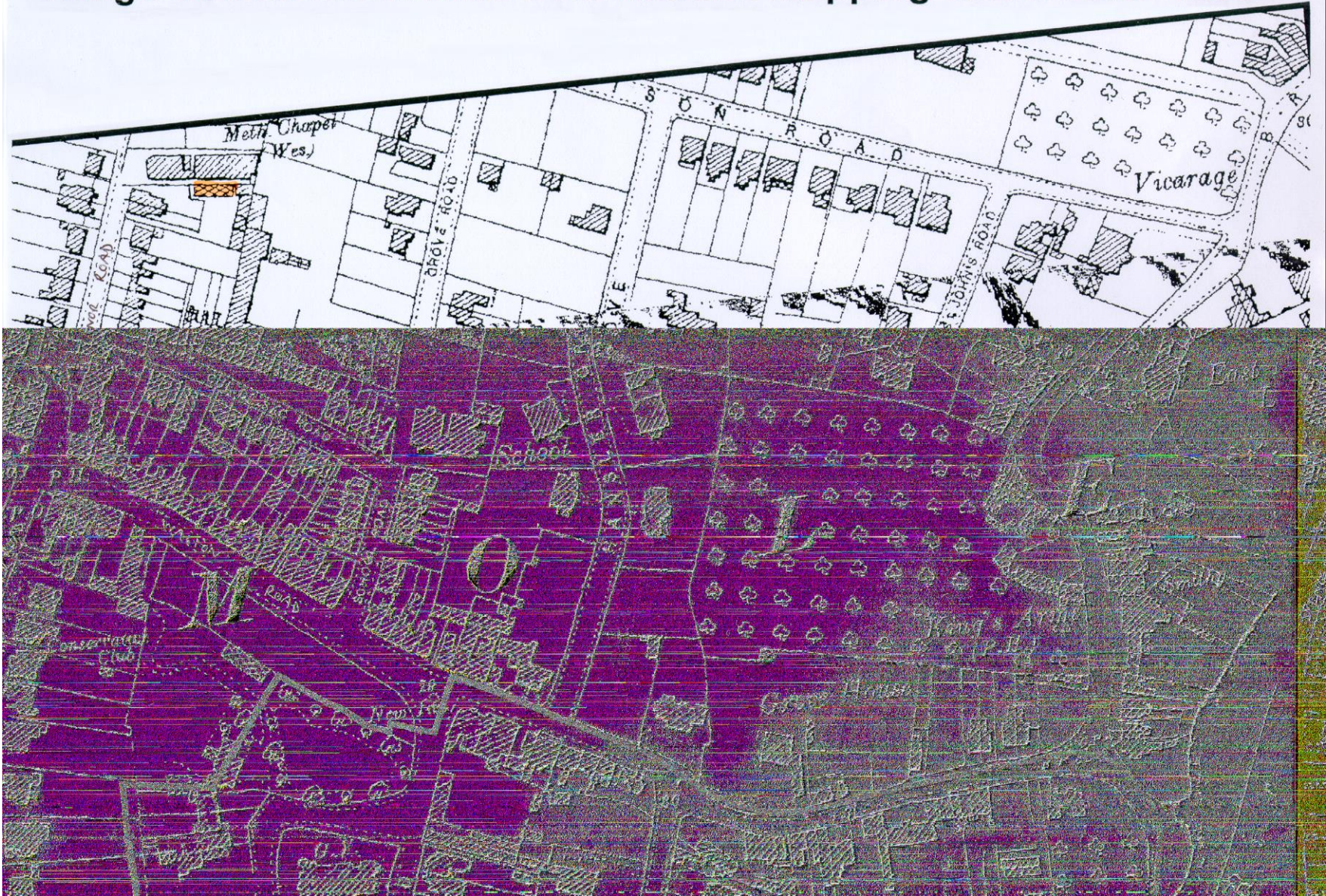
334.1987

Bentall's Sports Pavilion after a fire
(now replaced by "Grovelands" Estate). 1976



Engraved by Samuel Cousins from a Picture by the Hon. and Learned J. M. A. Esq. of the High Court of Chancery in the High Court.

Village Conservation Area over Historic Mapping dated 1895 -1898





WAVERLEY COTTAGE





W. H. DEAKIN.

EAST MOLESEY.

THE ORIGINAL
COTTAGE HOSPITAL 55, PEMBERTON ROAD
WAS BEQUEATHED BY THE WILL OF
M^{RS} MARGARET FULLER
AS A MEMORIAL TO HER HUSBAND.
THE PROCEEDS OF THE SALE WHEREOF
HAVE BEEN USED FOR THE REBUILDING
OF THIS HOSPITAL.



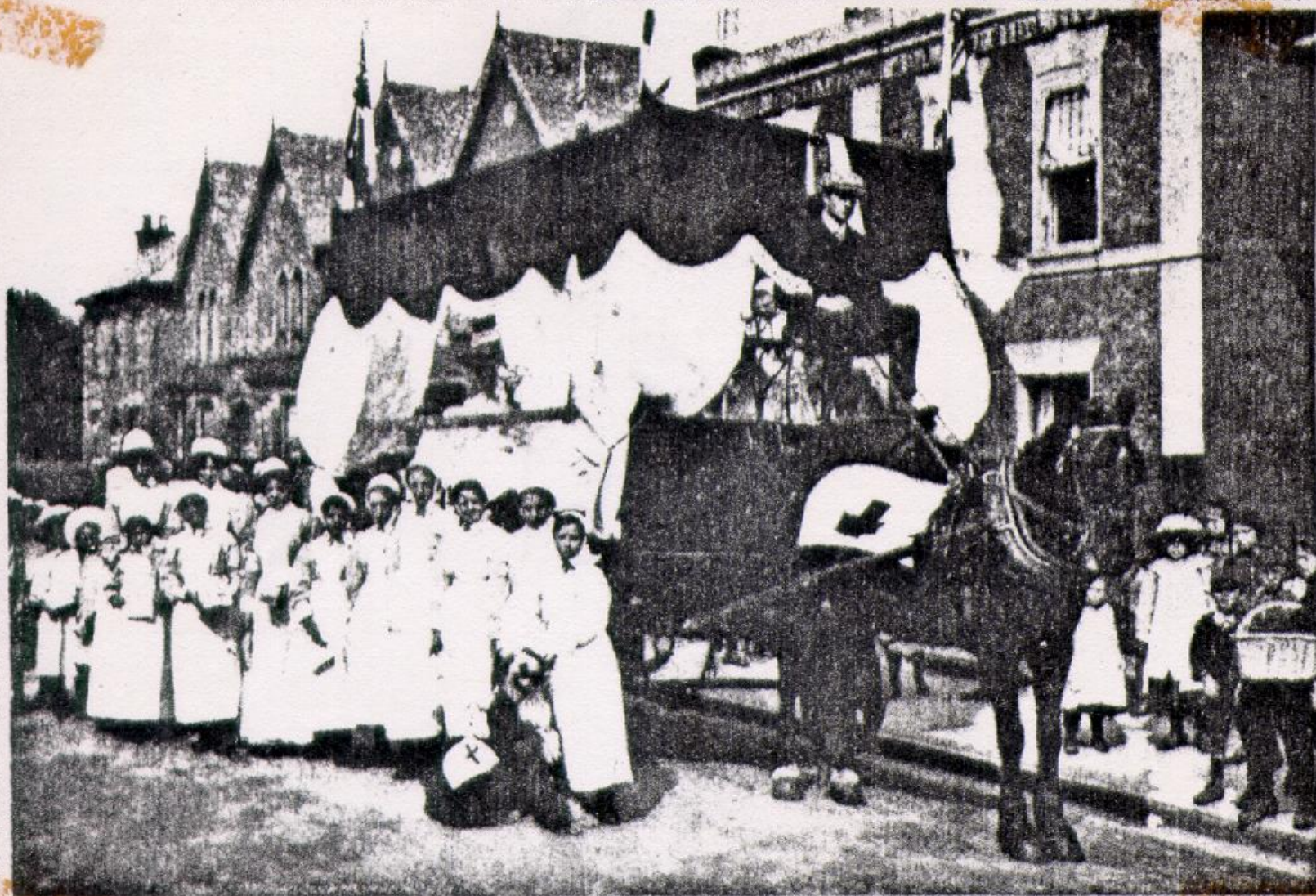
Hospital Band Song, at East Molesey, Sept 27th 1913.



New Zealand Studios

EAST MOLESEY HOSPITAL "POUND DAY":
Some of the Collectors.

[Kingston]



Jas. S. Cufford

[Kingston]

HOSPITAL DAY AT EAST MOLESEY.

THIS BUILDING AND SITE
WAS ACQUIRED FOR A HOSPITAL,
THROUGH THE GENEROUS GIFTS OF
HAROLD WESLEY ESQ.
AND MANY OTHER SUBSCRIBERS.
OPENED BY LADY FIRTH,
FEBRUARY 22ND 1936.

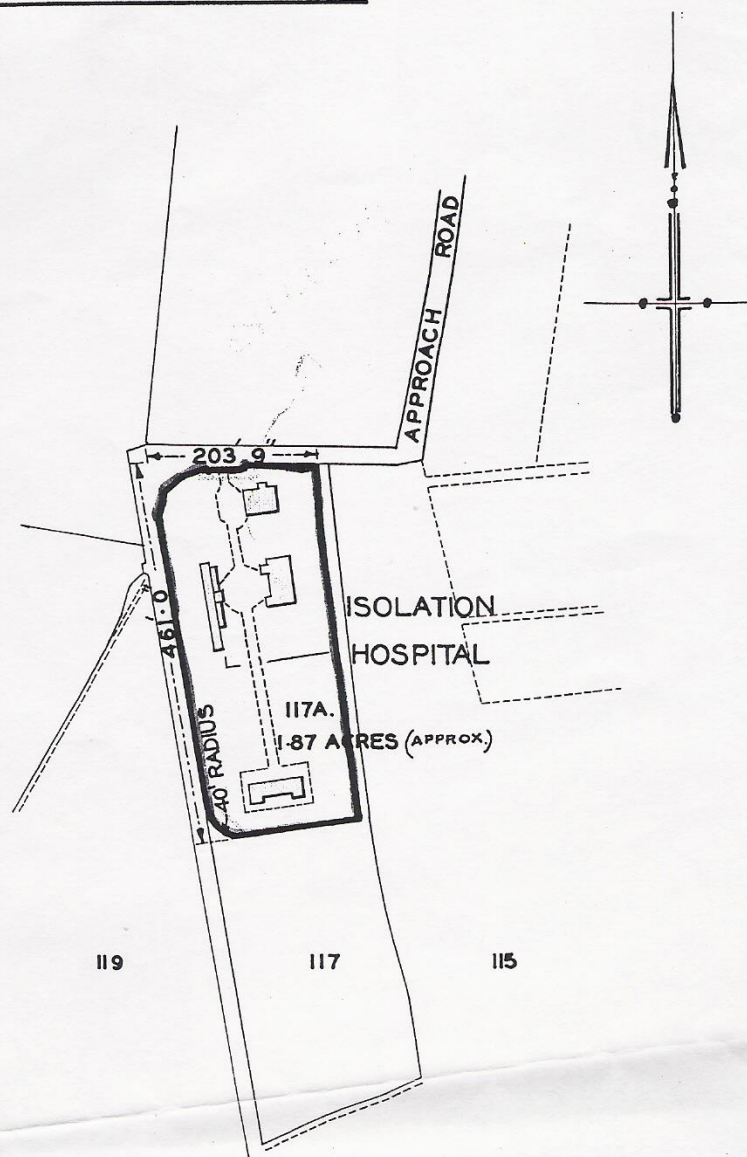
C. NIELSON ESQ.
Chairman of Committee of Management.





THIS FOUNDATION STONE
WAS LAID BY
JAMES RAY ESQ. J.P.
CHAIRMAN OF THE COUNCIL
ON THE 6TH DAY OF AUGUST 1910
IN THE PRESENCE OF THE FOLLOWING MEMBERS
OF THE ISOLATION HOSPITAL COMMITTEE
VIZ-MESS^{RS} ALDERTON, BARD, JURY, LETCHER,
MATCHELL, WHEATLEY, AND WINTER
D. CANN ESQ. THE CLERK TO THE COUNCIL
THE ARCHITECTS, MESS^{RS} FOSTER LOVELL & LODGE
AND THE BUILDERS, JOHN APPLEBY & SONS

PLAN REFERRED TO.—



SCALE 1:2500





NHS in Molesey in 1960







A MOLESEY DOCTOR













THE END